

THE COLLEGE CRUSADE 2008 ANNUAL REPORT CARD

CRUSADER PROFILE

Grade in 2007–2008	8th	10th	12th
Number enrolled in 3rd grade	612	700	686
Current active enrollment	463	534	327
Eligible for Free or Reduced Lunch	89%	84%	82%

Race or Ethnicity

American Indian	2%	3%	2%
Asian	5%	6%	6%
African-American	15%	17%	14%
Hispanic	60%	52%	60%
Multiracial	7%	6%	4%
White	12%	16%	15%

Sex

Female	49%	50%	55%
Male	51%	50%	45%

School District

Central Falls	12%	13%	15%
Pawtucket	15%	16%	10%
Providence	53%	55%	57%
Woonsocket	9%	6%	9%
Other	11%	10%	9%

Primary Language Spoken by Crusader

	8th	10th	12th
English	56%	73%	**
Spanish	37%	18%	**
Other	7%	9%	**

Primary Language Spoken at Home

English	54%	44%	**
Spanish	38%	42%	**
Other	8%	14%	**

Parents Who Are College Graduates

	20%	20%	17%
--	-----	-----	-----

Single-parent Family

	55%	56%	62%
--	-----	-----	-----

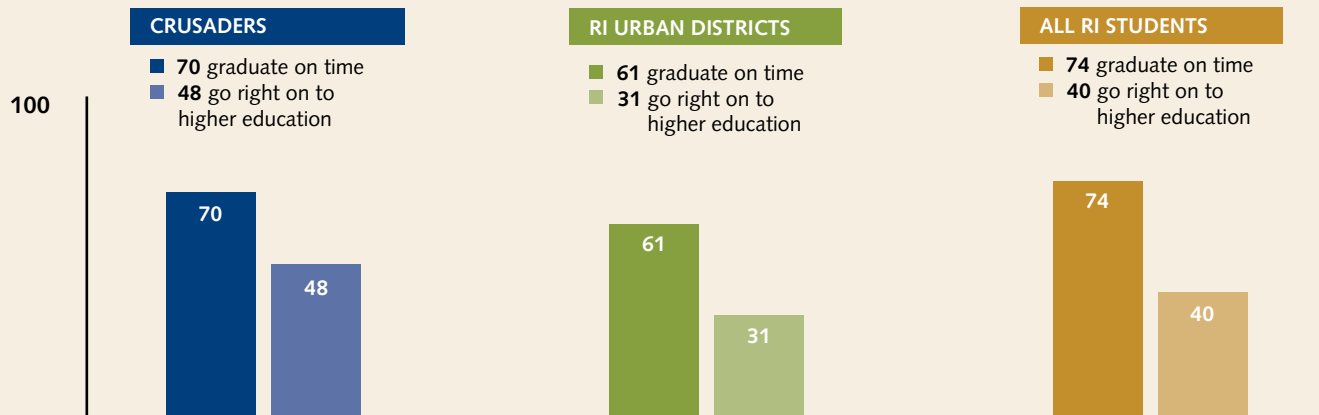
** Question not asked at time of enrollment.



GRADUATION AND COLLEGE-GOING RATES

Crusaders graduate and go on to college at a higher rate than Rhode Island's urban students.

For every 100 students who enter 9th grade...



Sources: Graduation data from RI Department of Education. College-going rate for Crusaders is from the RI Higher Education Assistance Authority and the National Student Clearinghouse. College-going rates for urban districts are from the Education Commission of the States' 2003 report "Closing the College Participation Gap." This figure relates specifically to the performance of low-income RI students. College-going rates for the state are from the National Center for Higher Education Management Systems.



THE COLLEGE CRUSADE
OF RHODE ISLAND

Inspire. Support. Believe.

Percentage of Low-Income and Minority Students

	Students Eligible for Free or Reduced Lunch	Students from Racial and Ethnic Minority Groups
Crusaders	83%	83%
RI urban districts*	79%	75%

*Data for urban districts from the Rhode Island Department of Elementary and Secondary Education.

Attendance Rates	Middle School	High School
Crusaders	92%	87%
RI urban districts	91%	84%
Statewide	94%	93%

Crusader Assets Summary*	Crusaders	Youth Nationwide
Presence of positive role model	84%	30%
Percent of the 40 developmental assets youth possess	81%	50%

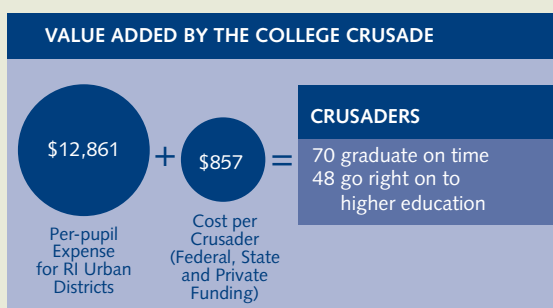
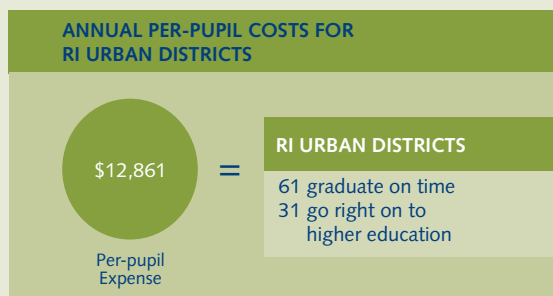
*The Search Institute has identified 40 key developmental assets. It has found a strong correlation between the percent of these assets that youth possess and success in school and life. National data is based on Search Institute studies of more than two million youth from a wide variety of social and economic backgrounds. Crusader data is based upon The College Crusade's surveys.



CRUSADER ASSETS DETAILS AGREE OR COMPLETELY AGREE

	8th	10th	12th
<i>I receive support from three or more adults, not counting my parents.</i>	76%	80%	84%
<i>I have a useful part to play in my community.</i>	63%	72%	68%
<i>My parent(s) and/or other adults model positive, responsible behavior.</i>	83%	84%	81%
<i>I spend three or more hours per week in sports, clubs, or other school/community organizations.</i>	62%	59%	59%
<i>I am motivated to do well in school.</i>	82%	86%	80%
<i>I place a high value on helping other people.</i>	84%	88%	81%
<i>I try to resolve conflict nonviolently.</i>	80%	85%	80%
<i>My life has a positive purpose.</i>	83%	85%	80%

A COST-EFFECTIVE STRATEGY



The difference that makes *the difference*...

Again this year, there is a direct link between active participation in The College Crusade and graduating on time and going right on to higher education. Compared to Crusaders who did not graduate on time, these successful Crusaders:

- Spent three times as many hours in our college-readiness programs and services
- Spent five times as many hours with their middle school and high school Advisors



THE COLLEGE CRUSADE
OF RHODE ISLAND

Inspire. Support. Believe.

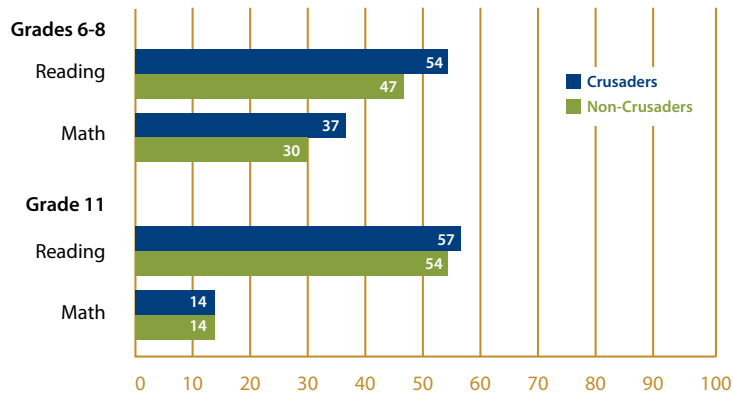
ANNUAL REPORT CARD CONTINUED

SCHOOL CHANGES IN ACADEMIC YEAR

	8th	10th	12th
No school changes	89%	87%	95%
1 school change	8%	11%	4%
2 school changes	2%	1%	1%
3 or more school changes	<1%	<1%	0%

NECAP SCORES FOR RI CORE URBAN DISTRICTS

Percent of students scoring proficient or
proficient with distinction, Fall 2008



Source: RI Department of Education.

PERCENT AT APPROPRIATE GRADE LEVEL

	8th	10th	12th
Percent on-grade	88%	68%	79%

CAREER KNOWLEDGE

	8th	10th	12th
Think going to college will help with career choices	90%	92%	95%

POST-SECONDARY ASPIRATIONS AND KNOWLEDGE

	8th	10th	12th
Plan to go to college right after high school	81%	82%	83%
Expect to earn a 4-year degree or higher	74%	76%	74%
Think they can afford to attend a public 4-year college using financial aid, scholarships, and family resources	48%	50%	55%